



NEFTEKAMSK MACHINERY PLANT OF SPECIAL EQUIPMENT

DECANTER CENTRIFUGE

CRUISER

MK 757-50-48-UKhL3.1-0



CRUISER MK 7AB-XX-XX-XXXX-X

- DECANTER CENTRIFUGE MODIFICATION
- CLIMATIC CATEGORY AS PER GOST STANDARD 15150-69
- OVERALL CAPACITY OF ELECTRICAL ENERGY CONSUMPTION, kW
- MAXIMUM THROUGHPUT CAPACITY (M³/HOUR)
- PRODUCT MODEL
- UNIT ROTATION AXIS
(5 – HORIZONTAL, 4 – VERTICAL)
- MANUFACTURER'S BASIC DESIGNATION OF DECANTER CENTRIFUGES
- MANUFACTURER'S TRADING MARK

PURPOSE

CRUISER MK 757 centrifuges are decanter-type separators with a horizontal axis of rotation and designed to separate the solid phase (sludge) from liquid drilling mud on water and hydrocarbon basis. The design of the centrifuge allows to remove sludge with a low specific gravity from the solution. Centrifuges CRUISER MK 757 have increased productivity and are used for processing large volumes of drilling mud.

DESIGN AND PERFORMANCE

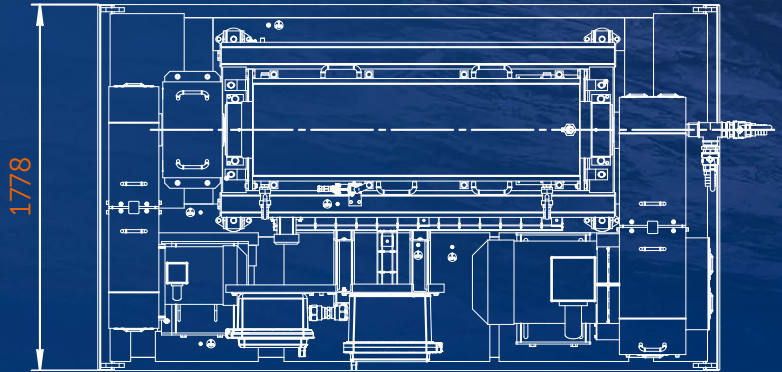
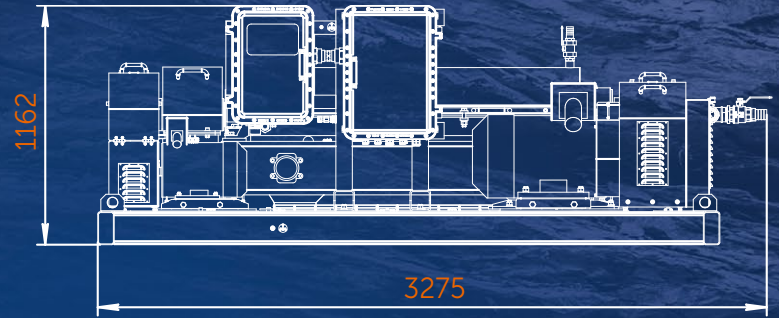
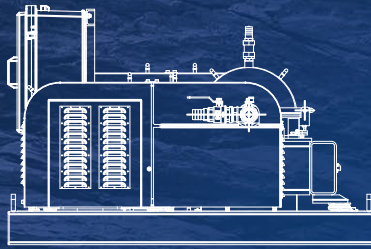
All main details of the working part of the centrifuge are made of stainless steel. It is possible to change the drum rotation speed by changing the centrifuge drive pulleys, which determines the minimum size of solid particles removed from the solution.

The service life of the conveyor auger is increased due to the use of brazed plates made of wear-resistant tungsten carbide. Easily replaceable wear-resistant ductile iron nozzles are used to extend life of the sludge outlets. Precise balancing of centrifuge units reduces noise and vibration levels of the structure.

SAFETY

All electrical equipment of the centrifuges is explosion-proof, which allows them to be used in well drilling conditions.

Centrifuges are equipped with additional devices that increase safety of work and protect against overload and breakdown.



DECANTER CENTRIFUGE

CRUISER

MK 757-50-48-UKhL3.1-0

TECHNICAL SPECIFICATIONS

Parameter name		Value
Processed material type		Drilling mud based on hydrocarbon or water
Specific gravity of the processed material	kg/m ³	no more than 2200
pH level of the processed material		4 - 12
Max.temperature of the processed material	°C	+95
Conveyor type		screw, with axial flow
Drum: length x diameter	mm	1479 x 356
working parts material		Stainless steel
The size of the removed particles at rated speed drum rotation:		
1900 rpm	micron	6-9
2500 rpm		4-5
3250 rpm		2-3

Parameter name		Value
G overload factor at rated speed drum rotation:		718
1900 rpm	mm	1243
2500 rpm		2100
3250 rpm		
Maximum performance	m ³ /h	50
Vibration intensity	mm/s	≤7.5
Overall dimensions	mm	3023 x 1778 x 1161
Weight	kg	2850
Nom.power of electric motors:		
main drive	kW	37
auxiliary drive		11
Type of current		380 V, alternating current, 50 Hz, 3 phases +PE
Explosion protection		IIGbcIIBT4

In connection with constant work to improve the centrifuge in order to increase reliability and performance, design changes may be made that are not reflected in this description.



Manufacturer: NKMZ-ST, Ltd.

19 Magistralnaya St., Neftekamsk, Republic of Bashkortostan, 452683, Russia
 Tel. +7 (34783) 2-02-02, 2-00-13, 7-02-39 | www.nkmzst.ru, st@nkmz.ru