

Assembly Hoist PM-25 Burlak 250

Assembly hoist PM-25 hydro with the hydraulic drive of boom pitch and round trip hook block is designed for loading-uploading operations at mounting of drilling and operational equipment, wells construction and other operations, and shifting of loads (on a hook) within closely located erecting sites.

The basis for transport, installation and power-operated base of the assembly hoist can be a T-10M, TM10.00E or other types of tractors. By desire of a customer, the tractor can be completed with cab double glazing, an extra cabin heater, heat preparation system equipped with the starting preheater, conditioner and others.

Hoist is operated from the tractor cab; operating mechanism horns and foot levers are installed in a special hole of the cab rear wall, the driver's seat is 180° swivel with detent.

The fuel tank and counterweight are placed at the front part of the tractor. Extra counterweight is in the drawbar.

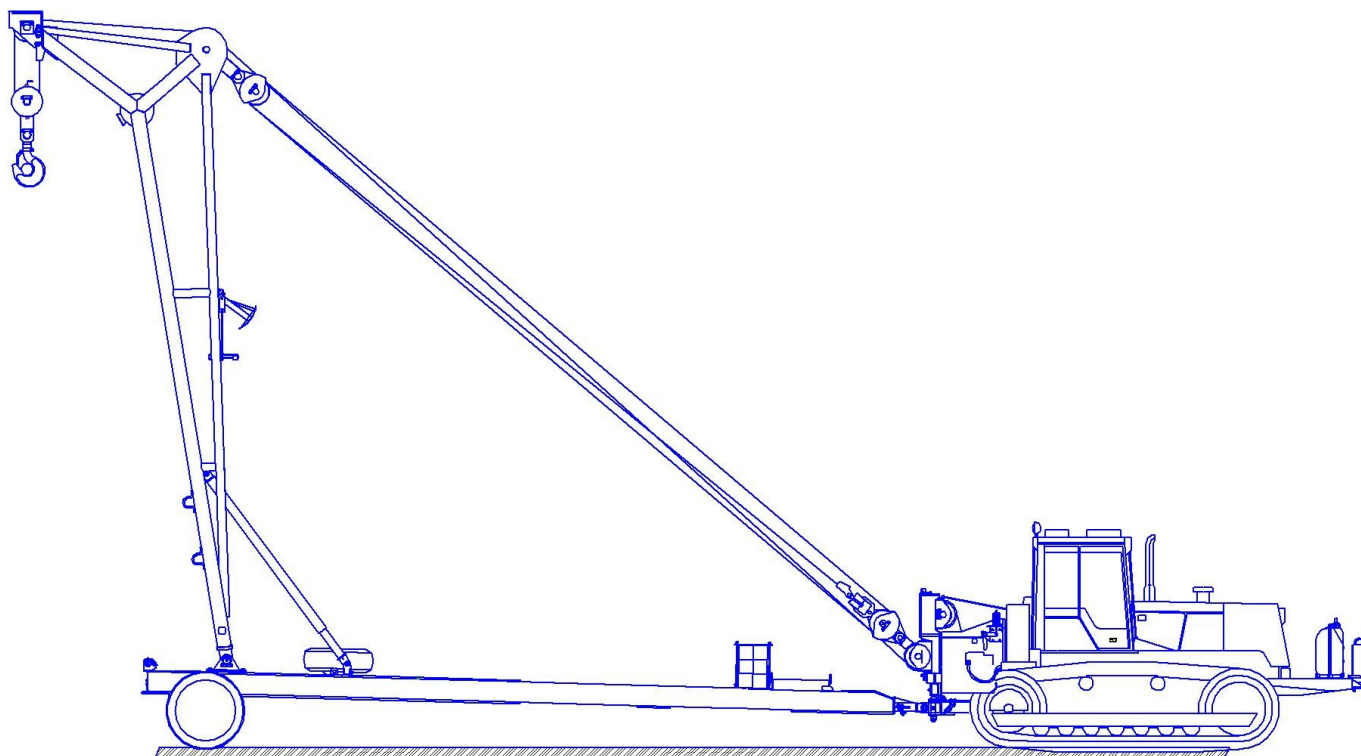
One can complete the assembly hoist with the following:

- bulldozer blade
- boom support insert

Specifications

Assembly hoist type	Boom, tractor trailed, nonrotative, with tiltable boom
Assembly hoist erection and power base	Tractor T10M
Mechanism classification group according to ISO 4301/1	MZ
Load carrying capacity, t	25
Load moment, t x m	62.5
Boom outreach, m:	
- min.	2.5
- max.	7
Hook lifting height, m	8.5
Hook lifting speed, m/min	2.2...4.8
Hook lowering speed, m/min	2.9...6.2
Assembly hoist traveling speed, km/h, max.:	
- with load	3.7
- without load	5.3
Way climb grade, degr., max.	3
Winch	Double-drum, with separate drum switching, reversible with ratchet stop
Line diameter, mm	19.5
Winch brake	Separate, normally closed, belt-type
Sheave blocks rate:	
- load sheave block rate	8
- boom sheave block rate	6
Safety devices:	
- Load limiter	Signaling
- Hook hoisting height limiter	Signaling
- Boom stop	Mechanical
- Capacity indicator depending on boom outreach	Visual

- Swing indicator	Visual
Electrical equipment:	
- Electric tension of the main power supply source, V	24
Overall dimensions in transit condition with folded boom	
length, mm	17,000
width, mm	4660
height, mm	4340
Mass, t	33.7





Manufacturer: NKMZ-ST Ltd.
19, Magistralnaya st., Neftekamsk
Republic of Bashkortostan
Russian Federation 452683
Tel: +7(34783)2-02-02, 2-00-13.
www.nkmzst.ru, st@nkmz.ru