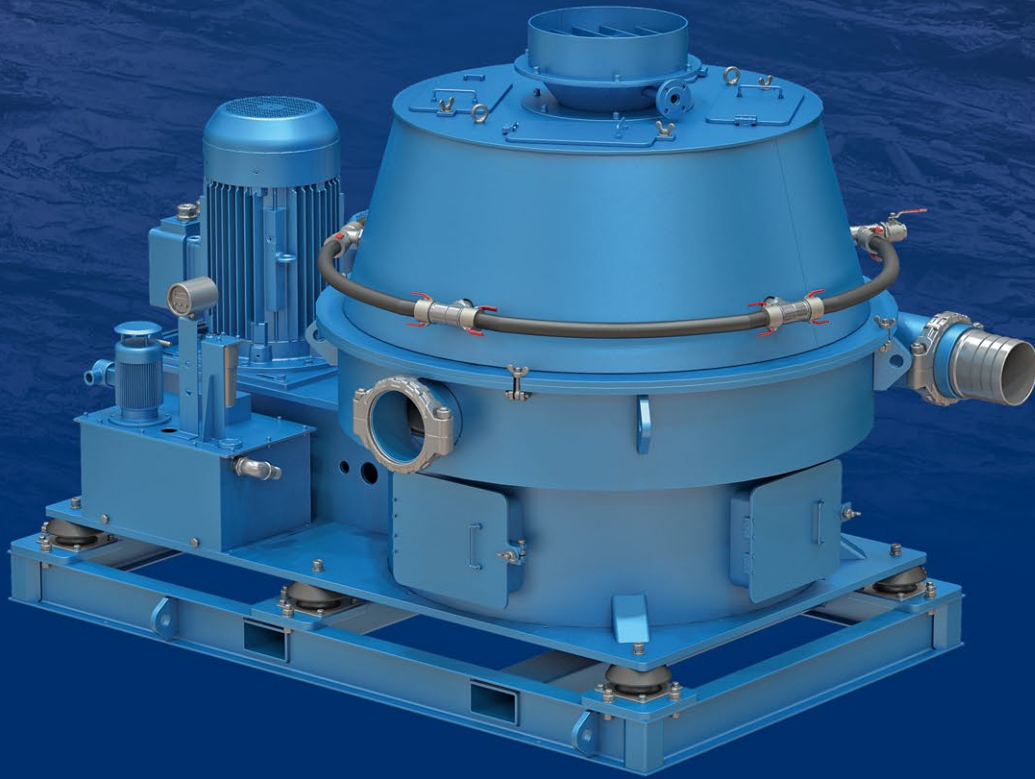




NEFTEKAMSK MACHINERY PLANT
OF SPECIAL EQUIPMENT



CENTRIFUGE

CRUISER

MK 749-34-55-UKhL1-0

EFFICIENCY AND PERFORMANCE

It is a centrifugal-grid type centrifuge cuttings dryer, where the drilling mud is cleaned from drill cuttings by scattering the solid phase under the action of centrifugal forces through a working sieve with a certain cell. Installation of increased power allows to process large volumes of solution.

EQUIPMENT

Components of Russian manufacturers are used.

DESIGN

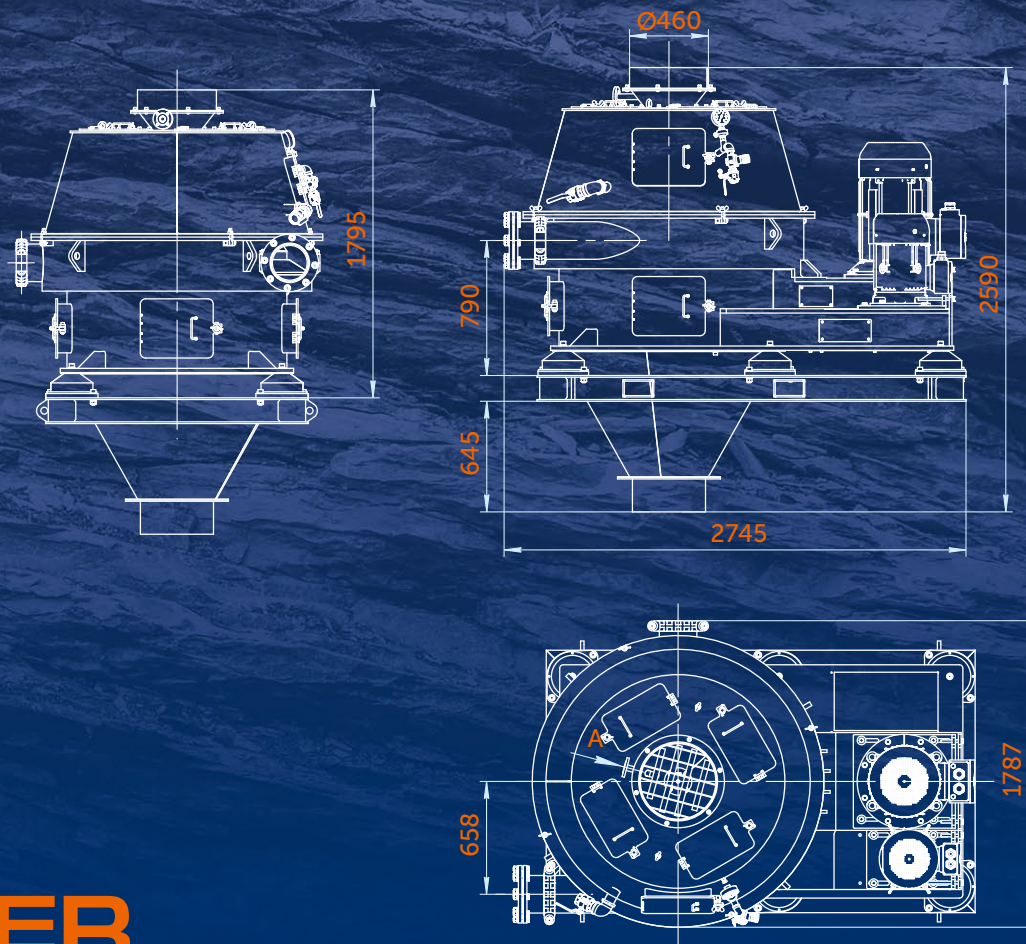
Compact, vertical design.

RELIABILITY AND OPERATING CONDITIONS

The reinforced design of the unit allows reliable operation in a wide range of solids sizes and solution densities.

PAINT AND COATINGS

Paint and coatings are based on premium enamels that provide high resistance to weathering, drilling mud and mechanical abrasion. The service life of the coating is 10 years.



CENTRIFUGE

CRUISER

MK 749-34-55-UKhL1-0

TECHNICAL SPECIFICATIONS

Parameter		Value
Performance	m ³ /h	40-50(34)
Centrifugal G-force	G	420
Residual content of the liquid phase	%	3-12
Main drive power	kW	55
Electric equipment explosion protection class		II GbclIBT4
Overall sizes, L x W x H	mm	2745 x 1787 x 1914
Mass	kg	4515

In connection with continuous centrifuge improvement work in order to increase reliability and performance, changes may be made to the design that are not stated in this description.



Manufacturer: NKMZ-ST, Ltd.

19 Magistralnaya St., Neftekamsk, Republic of Bashkortostan, 452683, Russia
 Tel. +7 (34783) 2-02-02, 2-00-13, 7-02-39 | www.nkmzst.ru, st@nkmz.ru