

Assembly Hoist PM-25 Hydro Burlak 250 Hydro

Assembly hoist PM-25 hydro with the hydraulic drive of boom luffing and round trip hook assembly is designed for materials-handling mechanization at mounting of drilling and oil-field equipment, well site construction and other hoisting operations, and loads shifting (with a hook) within closely located erection sites.

The basis for transport, installation and load-carrying of the hoist can be a tractor T-10M, TM10.00E or other types of tractors.

By desire of a customer, the tractor can be completed with double glazing, an extra cabin heater, heat preparation system equipped with the starting preheater, conditioner and other. The gearing system can be mechanical, hydromechanical or hydrostatic, as agreed with a customer.

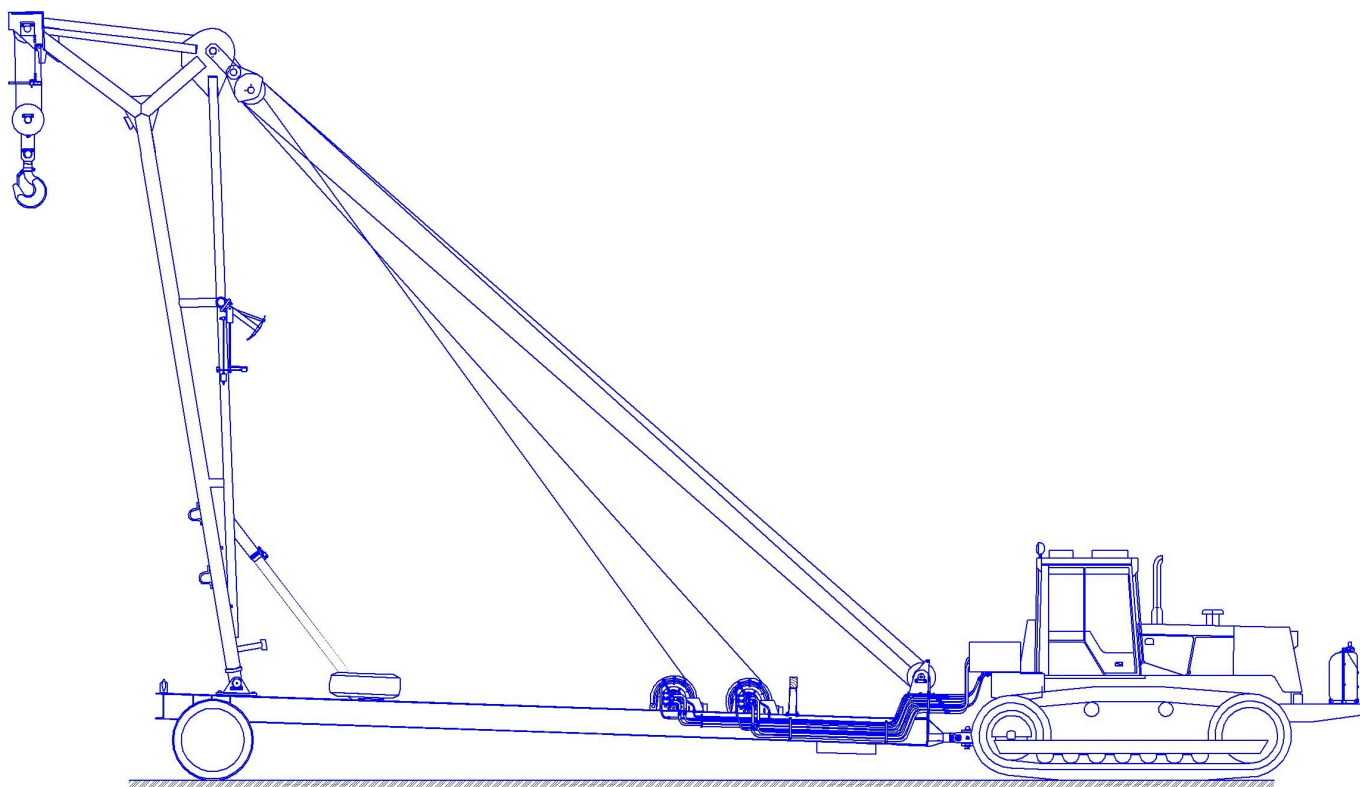
Winches locate on the drawbar. Arms are separated by quick-release connections between the drawbar and tractor and the counterweight load is located on the drawbar.

- The drawbar is made of Nr.35 H-beam and 09G2S steel that increases the resource and allows to operate the hoist at low temperatures.
- Winches have wide margin of load carrying capacity and braking moment that allows to perform short-term operations with the load up to 32 t. The drum has radial grooving and a hold-down to ensure balanced rope laying and the winch brake is normally closed frictional.
- Hydraulic system is assembled from units of leading domestic and foreign manufacturers. Hydraulic control valves are placed behind the tractor cabin on a frame under the cover.
- Assembly hoist is equipped with safety devices like: overload limiter, hook lifting height limiter and boom min. outreach limiter. In addition, there are provided a telescopic boom stop and indicator of tilt and acceptable carrying capacity.
- Load-carrying equipment control is performed by a joystick.
By desire, the assembly hoist can be equipped by:
 - bulldozer blade
 - boom support insert

Specifications

Assembly hoist type	Boom, tractor trailed, hydraulic, nonrotative with tiltable boom
Hoist erection and power base	Tractor T10M
Mechanism classification group according to ISO 4301/1	MZ
Load carrying capacity, t	25
Load moment, txm	62.5
Boom outreach, m:	
- min.	2.5
- max.	7
Hook hoisting height, m	8.5
Hook hoisting speed, m/min	4.7
Hook lowering speed, m/min	4.7
Hoist traveling speed, km/h, max.	
- with load	3.7
- without load	5.3
Way climb grade, degr., max	3
Winch	Double-drum planetary, with radial grooving on a drum and a hold-down roll
Number of winches, pcs.	2
Rope diameter, mm	19.5
Winch axial-piston hydraulic motor	310.3.112
Winch brake	Multidisk frictional with hydraulic releasing of brake

Pump	NSh-100
Nominal pressure in the hydraulic system, МПа	16
Sheave blocks rate:	
- load sheave block rate	8
- boom sheave block rate	6
Rope sheave diameter, mm	350
Safety devices:	
- Load limiter	Electromechanical
- Hook hoisting height limiter	Electrically driven
- Boom min. outreach limiter	Electrically driven
- Boom stop	Mechanical
- Acceptable carrying capacity indicator (depending on the boom outreach)	Visual
- Swing indicator	Visual
Electrical equipment:	
- Electric tension of the main power supply source, V	24
Overall dimensions in transit condition with folded boom	
length, mm	17,000
width, mm	4660
height, mm	4520
Mass, t	32





Manufacturer: NKMZ-ST Ltd.
19, Magistralnaya st., Neftekamsk
Republic of Bashkortostan
Russian Federation 452683
Tel: +7(34783)2-02-02, 2-00-13.
www.nkmzst.ru, st@nkmz.ru